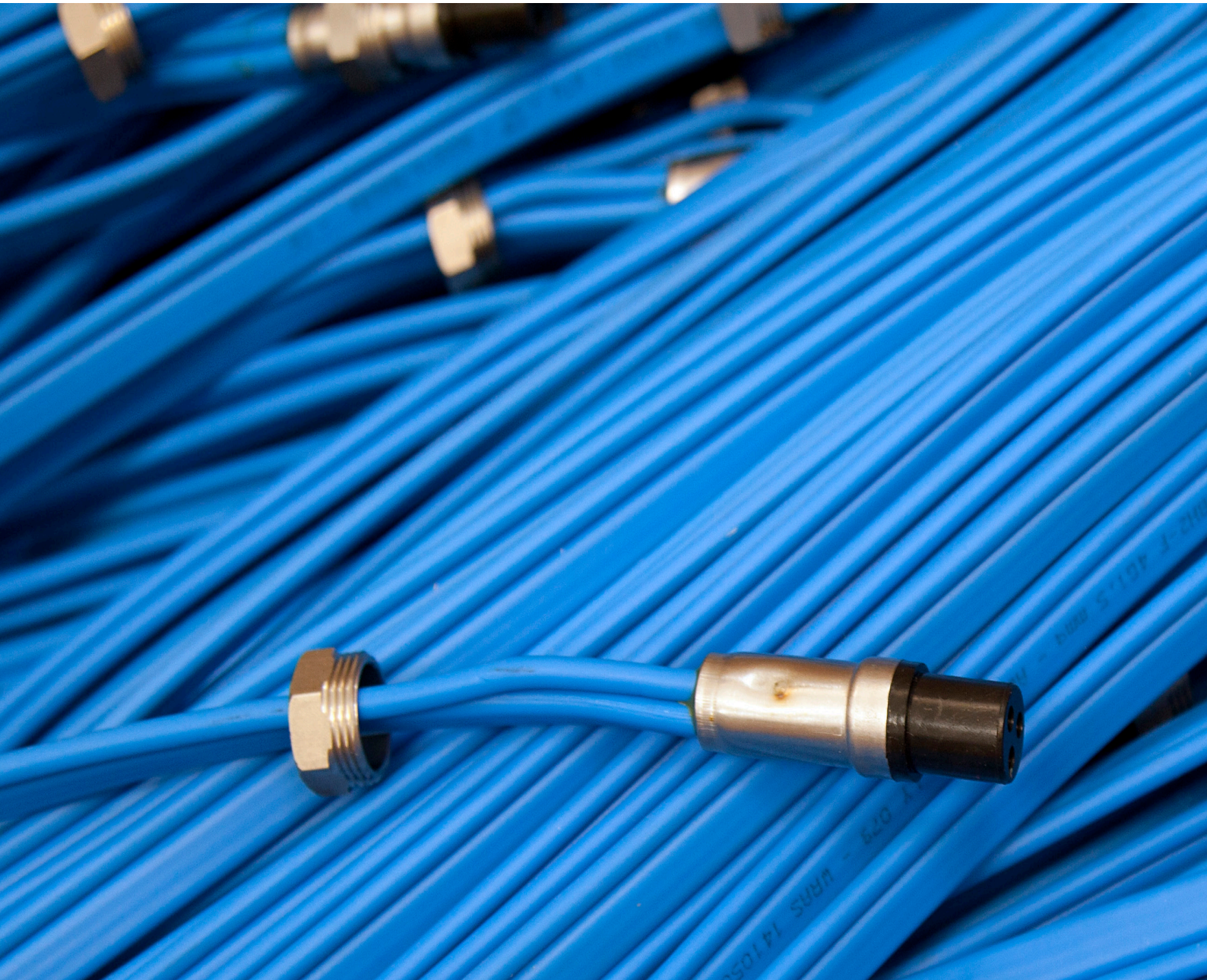


# ACCESSORIES



**COMPLEMENTS FOR SUBMERSIBLE  
MOTORS AND ELECTROPUMPS**

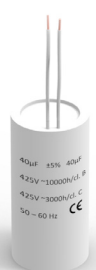


Made in Italy

## SACRIFICIAL ANODE

Model	Code	Description
	ANODE4OM	<p><b>DESIGNED FOR THE SERIES OF 4" OIL FILLED SUBMERSIBLE MOTORS 4OM, 4OM2W, 4OME, 4OME SOLAR</b></p> <p>This special anode, made in "cadmium free " zinc-aluminium, protects motor from corrosion caused by stray currents or by usage in particularly aggressive waters.</p> <p>It's been designed to be easily applied to the lower end of the motor, allowing a quick installation just in case of need.</p>
	ANODEFROG	<p><b>DESIGNED FOR THE SERIES OF ELECTRO-PUMPS 5" FROG</b></p> <p>This special anode, made in "cadmium free " zinc-aluminium, protects the 5" electropump FROG from corrosion caused by stray currents or by usage in particularly aggressive waters.</p> <p>It's been designed to be easily applied to the lower end of the 5" electropump FROG, allowing a quick installation just in case of need.</p>

## CAPACITORS

Model	Code	µF	Voltage	Frequency	Description
	CAP20	20	450V C-Class	50/60 Hz	Capacitors with flexible leads of 100 mm length and water-tight end.
	CAP25	25	450V C-Class	50/60 Hz	
	CAP35	35	450V C-Class	50/60 Hz	
	CAP40	40	450V C-Class	50/60 Hz	
	CAP60	60	450V C-Class	50/60 Hz	
	CAP70	70	450V C-Class	50/60 Hz	
	CAP80	80	450V C-Class	50/60 Hz	

## CABLES FOR SUBMERSIBLE MOTORS AND ELECTROPUMPS

Model	Code	Length [m]	Section [mm <sup>2</sup> ]	Description
<b>4OM</b>		<b>4WM</b>		
	0703402	0704031	1,7	1,5
	0703403	0704032	2,7	2
	0703404	0704033	3,5	2
	0703405	0704034	10	1,5
	0703406	0704035	20	1,5
	0703407	0704036	20	2
	0703408	0704037	30	1,5
	0703409	0704038	30	2
	0703411	0704039	50	1,5
	0703412	0704040	50	2
<b>6OM</b>				
	0603401	3	4	
	0603403	4	8	
	0603414	10	4	
	0603415	10	8	
	0603408	30	4	
	0603409	30	8	
	0603410	50	4	
	0603411	50	8	
	0603416	80	4	
	0603417	80	8	
<b>4OM2W</b>		<b>4WM2W</b>		
	0703441	0704010	1,5	1,5
	0703442	0704011	20	1,5
	0703443	0704012	30	1,5
<b>4OME</b>		<b>4OME SOLAR</b>		
	0703471	1,5	1,5	
	0703473	30	1,5	



**CABLE WITH CONNECTOR FOR THE SERIES OF SUBMERSIBLE MOTORS 4OM, 4WM, 4OM2W, 4WM2W, 4OME, 4OME SOLAR AND 6OM**

Blue flat cable made in cross-linked gum with connector for submersible motor.

Usable up to about 250 meters depth, even in drinking water.

All cables are homologated ACS, KTW, WRAS.



### FROG


1101710	5" FROG cable 1-ph with Shuko plug	10	1
1101711	5" FROG cable 1-ph with Shuko plug	20	1
1101720	5" FROG cable 3-ph	10	1
1101721	5" FROG cable 3-ph	20	1

**CABLE WITH CABLE GLAND CONNECTOR FOR THE SERIES OF ELECTRO-PUMPS 5" FROG**

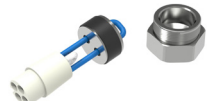
H07 RN-F cable with connector for fast and easy connection to electro-pumps.

Single-phase versions with Schuko plug end. Different plugs upon request.

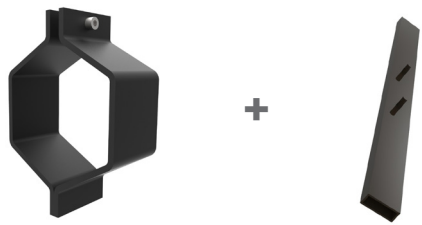
## FLOAT SWITCH FROG

Model	Code	Description
	1101702	<p><b>FLOAT SWITCH WITH CABLE GLAND CONNECTOR FOR THE SERIES OF ELECTROPUMPS 5" FROG</b></p> <p>Float switch with H07RN-F cable and connector for easy connection and removal.</p> <p><b>MAX. USAGE DEPTH</b> 40 m</p>


## PLUG CONNECTOR WITH FERRULE FROG

Model	Code	Description
	1101703KIT	<p><b>PLUG CONNECTOR WITH FERRULE FOR THE SERIES OF ELECTROPUMPS 5" FROG</b></p>

## DISASSEMBLY KIT FROG

Model	Code	Description
	0103101	<p><b>DISASSEMBLY KIT FOR THE SERIES OF ELECTROPUMPS 5" FROG</b></p> <p>This kit helps all installers to repair their FROG 5" submersible electropump.</p>

## PRESSURE TRANSDUCER 40ME

Model	Code	Description
	0703001	<p><b>PRESSURE TRANSDUCER FOR THE SERIES OF 4" OIL FILLED SUBMERSIBLE MOTORS 40ME</b></p> <p>0-16 bar 4-20 mA IP 65.</p>



**PM S.r.l.**

Via A. Volta, 8  
36040 Brendola (VI) - Italy  
T. +39 0444 673043  
F. +39 0444 677273  
info@pmtechnology.eu  
www.pmtechnology.eu



ISO 9001:2015 Certified Company

© COPYRIGHT PM S.r.l.

All rights reserved.  
All information shown in this catalogue are purely indicative;  
PM S.r.l. reserves the right to make any necessary variation without prior  
notice.

EDIT: BROCHURE ACCESSORIES EN/MAR/2023